

MANA CRESTA

Where Dreams Ascend to Reality





Elevation

Architectural Representation

Project Highlights

At Mana Cresta, our vision is to craft a lifestyle that transcends traditional living. Inspired by the natural flow and essence of the earth, this thoughtfully designed project combines aesthetic appeal with functional elegance. With its unique curvilinear architecture and spacious floor plans, every aspect of Mana Cresta is built to offer residents a serene, nurturing environment where nature and modernity come together seamlessly.



4 Iconic Towers Spread Across 2.45 Acres Of Land



Only 6 Flats Per Floor For Privacy And Exclusivity



30+ Thoughtfully Curated Amenities



180 Exquisite Homes With Unobstructed Sunrise & Sunset Views



Nature-Inspired Design With Curvilinear Balconies



Efficiently Designed Square-Shaped Floor Plans



Future-Ready Living With Dedicated Ev Charging Stations



All Images are Architectural Representation

● Legends ● Block ● Unit Number



Architectural Representation

Master Plan

Designed for a thoughtfully crafted community with a harmonious balance of active and passive spaces, our master plan ensures ample natural ventilation and clearly demarcated pedestrian and drive pathways, creating an exigent estate for your new beginnings

Legends

1. ARRIVAL PLAZA
2. PEDESTRIAN PATHWAY
3. DRIVEWAY
4. BUILDING DROP OFF
5. FEATURE WALL WITH LAWN
6. PERGOLA STRUCTURES AT RAMP ENTRANCE
7. PODS WITH LAWN
8. KIDS PLAY AREA WITH STRUCTURE
9. BASKETBALL PRACTICE COURT
10. FEATURE WALL WITH LAWN AND TREE PLANTERS
11. SURFACE CAR PARKING
12. INFORMAL SEATING WITH SHADE STRUCTURE & FEATURE WALL
13. ART WALL WITH LAWN AND TREE PLANTERS
14. EV CHARGING STATION WITH SOLAR ROOF
15. OPEN GYM
16. TREE COURT WITH INFORMAL SEATING
17. ENTRANCE PORTAL

Clubhouse

- WAITING RECEPTION LODGE
- MULTIPURPOSE HALL
- INDOOR GAME
- SNOOKER
- CAFE
- SPA & SALOON
- YOGA MEDITATION ROOM
- GYM
- SWIMMING POOL
- KIDS SWIMMING POOL
- TABLE TENNIS
- WASHROOM
- CHANGING ROOM
- TERRACE DECK
- READING ZONE

Floor Plans



2.5 BHK

SBUA	1456 SQFT
FACING	NORTH

3 BHK Comfort

SBUA	1579 SQFT
FACING	EAST



3 BHK Large

SBUA	1677 SQFT
FACING	WEST



3 BHK Grandeur

SBUA	1739 SQFT
FACING	EAST



Amidst the IT Corridor

(1.2 KM FROM SARJAPUR ROAD)

Experience Living at a Commutable Hub

Institutes

- 1 Nps East School
- 2 Harvest International School
- 3 Delhi Public School
- 4 Primus Public School
- 5 Pes University E-City
- 6 Oxford University – Bommanahalli
- 7 Glentree Academy
- 8 Notre Dame School
- 9 Sri Chaitanya Pu And Cbse College
- 10 Azim Premji University
- 11 Dayananda Sagar University
- 12 Amrita University

Hospitals

- 1 Manipal Hospital
- 2 Sakra World Hospital
- 3 Narayana Multispeciality Hospital
- 4 Cloudnine Hospitals
- 5 Belenus Champion Hospital

Techparks

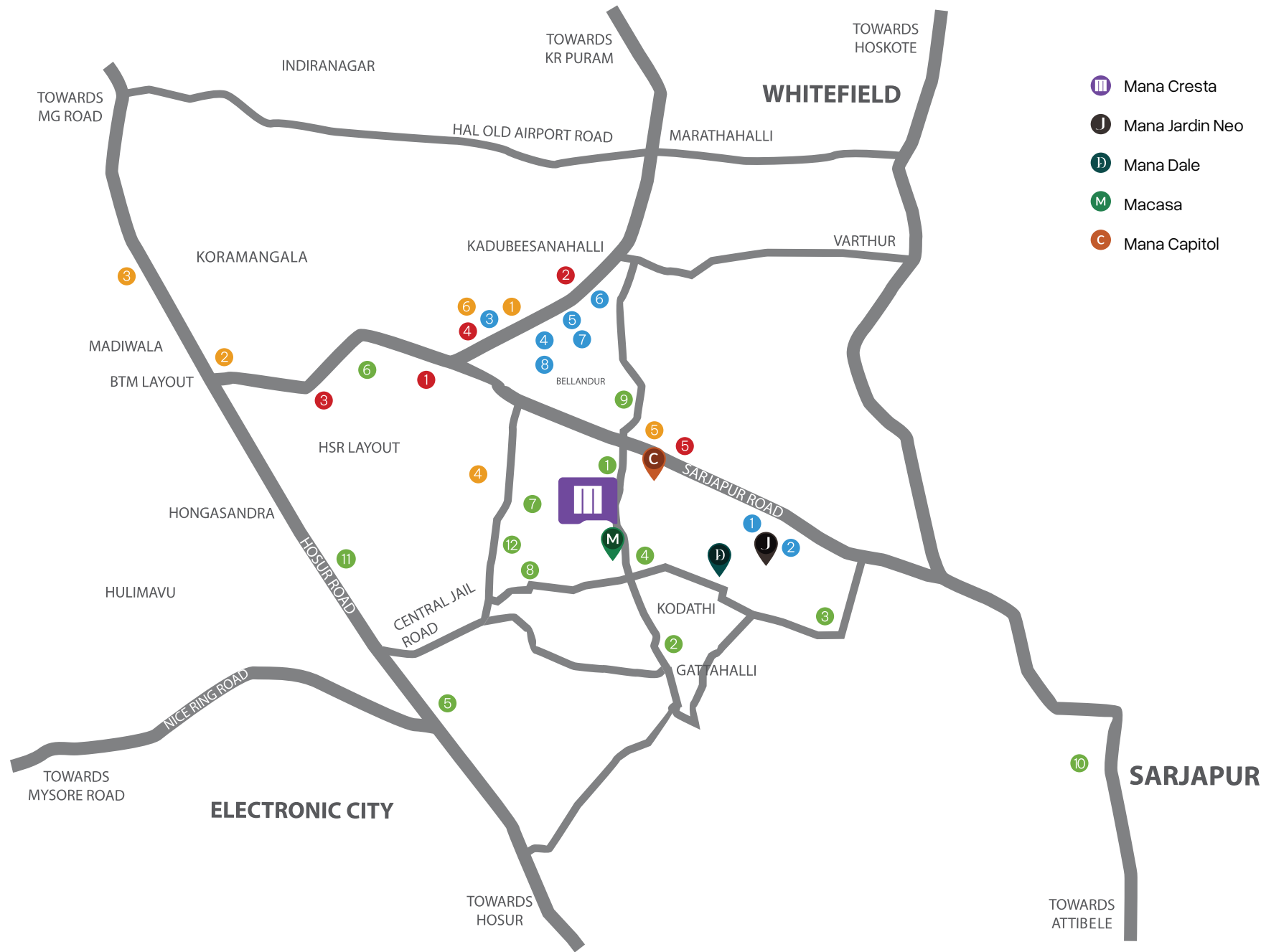
- 1 Rga Techpark
- 2 Wipro Corporate Office
- 3 Salarpuria Softzone
- 4 Rmz Eco Space
- 5 Embassy Tech Village
- 6 Rmz Eco World
- 7 Global Technology Park
- 8 Pritech Park Sez

Malls & Shopping

- 1 Soul Space Spirit Centro Mall
- 2 Market Square Mall
- 3 Nexus Mall Koramangala
- 4 Vishal Mart
- 5 D Mart
- 6 Reliance Fresh

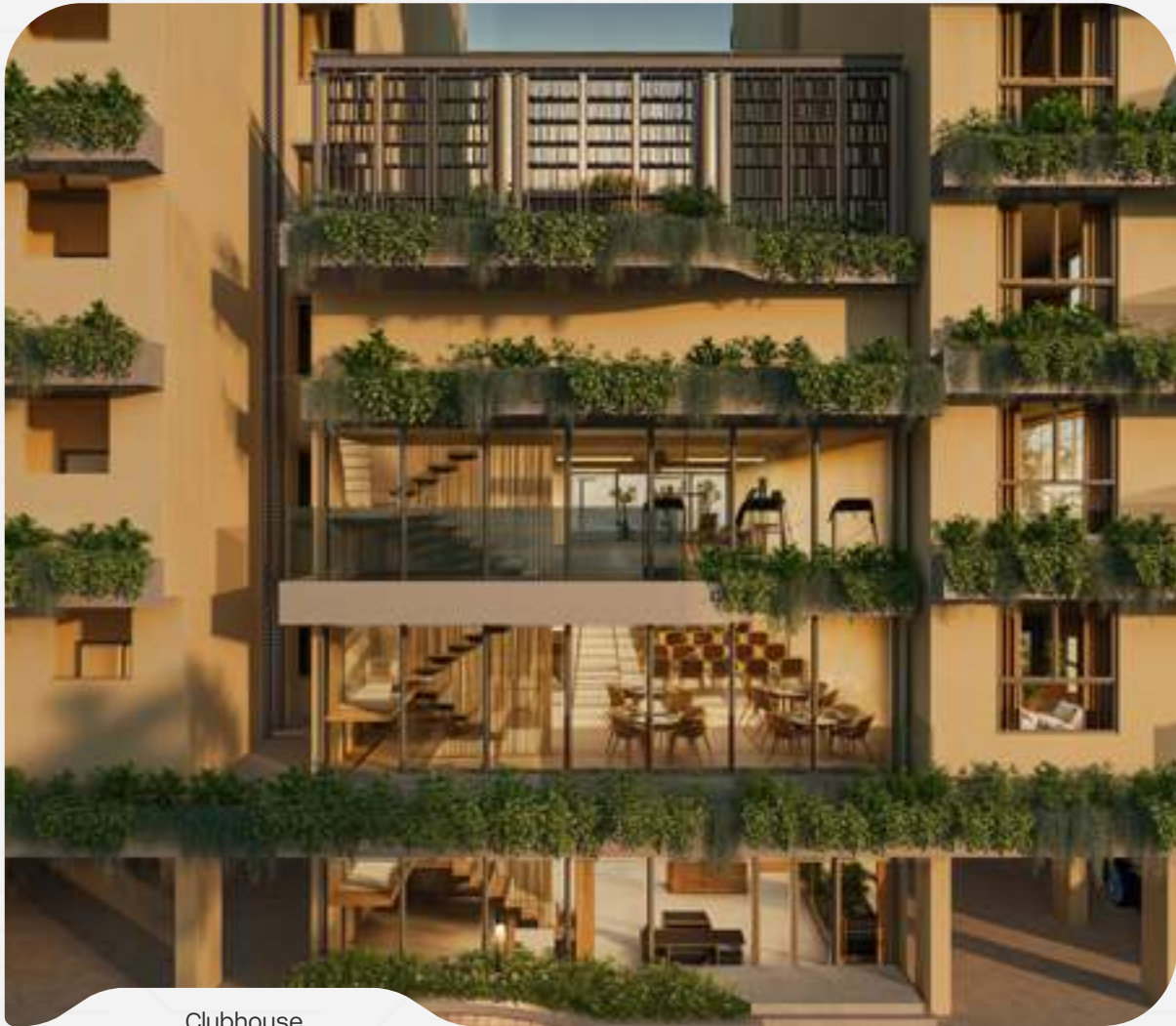


All Images are Representational Purpose only



Life's finest moments *awaits you...*

Experience a world of luxury in our lavish G+3 clubhouse at Mana Cresta, where your lifestyle dreams come alive. Enjoy leisure and relaxation with top-tier amenities, including a fully equipped gym, a spacious community hall, and a stunning rooftop swimming pool. This inviting space is designed to create unforgettable moments, fulfilling your dream of a serene, elevated lifestyle.



Clubhouse



Rooftop Swimming Pool



Social Pods

All Images are Architectural Representation

Specifications

Doors & Windows

- Teak Wood door frame with Moulded Panel Main door with melamine polishing
- Brass with SS finish fitting (Hinges & Latches) for main door with mortise lock.
- Sal wood door frame & painted finish Flush Door fitted with lock to all rooms & water proof doors for Bathrooms.
- For all Bedrooms and toilets, door frame and shutters with standard SS
- hardware fittings (hinges, latches & handles).
- UPVC windows with grills and Mosquito mesh.
- UPVC French door for Balcony with Mosquito mesh.
- UPVC ventilators (provision for exhaust fan)

Kitchen

- Provision for water purifier & chimney exhaust.
- Washing arrangement in utility area with water & drain line.

Toilets

- Hindware/ESS ESS by Asian paints/Jaquar or equivalent make and quality of general range C.P. Fittings.
- Hindware/ESS ESS by Asian paints/Jaquar or equivalent make and quality sanitary fittings of any white shades in color.
- Granite Counter in Master Bedroom toilet for Wash basin.

Generator

- Generator backup for Common Area (lifts & others)
- Lighting back up for each flat.

Car Parking

- One covered Car parking will be provided for every apartment.

Electrical

- Modular Switches — Schneider/Legrand/Anchor or Equivalent make.
- Concealed fire resistant ISI Standard quality copper wiring.
- Provision for A/c. in Master Bedroom.
- T.V & Telephone Point in Living & Master Bedroom.

Paints

- Emulsion For Internal Walls, Enamel Paint For Doors And Grills.
- Natural Polish For Main Doors.
- External Emulsion Paints (Weather Coat).

Flooring

- Laminated wooden flooring for Master Bedroom.
- Standard make vitrified tiles in all bedrooms, living room, dining, and kitchen.
- Standard make anti skid ceramic tiles for bathroom flooring.
- Standard make wall tiles upto 7 ft high in all toilets.
- Standard make dado Tiles up to 3.5 ft in utility walls.

Lifts

- Johnson or equivalent make branded automatic lifts.

Walls & Plastering

- RCC Framed Structure with Solid Blocks for walls masonry.
- Internal Walls with smooth finish & external walls of sponge finish plastering.
- Open kitchen concept
- Wall External 6" & internal wall 4" thick